

EQUIA Forte™ HT

Bulk fill glass hybrid restorative system

Cost-effective, long-term
restorative alternative^{1,2}



Since 1921
100 years of Quality in Dental



Cost-effective, long term restorative alternative^{1,2}

Building on the success of EQUIA Forte, **EQUIA Forte HT** is a cost-effective, long-term restorative alternative^{1,2} with enhanced mechanical properties^{3,4} and sound marginal seal. Thanks to the Glass Hybrid technology, consisting of smaller and highly reactive glass particles and longer polyacrylic acid chains, **EQUIA Forte HT** displays advanced mechanical properties with improved flow and non-sticky handling. To complete the restorative system, the self-adhesive resin, EQUIA Forte Coat, protects the restoration from acid exposure and helps to maintain excellent wear resistance over time.⁴ This makes **EQUIA Forte HT** a versatile and durable restorative alternative¹⁻⁵ for a wide range of indications in all patients.

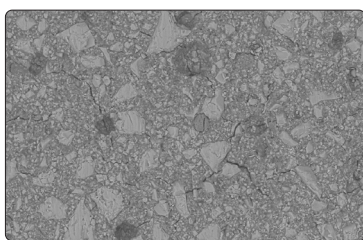
- Long-term performance and cost-effectiveness^{1,2}
- Excellent biocompatibility⁶⁻⁸
- Your alternative for a wide range of situations



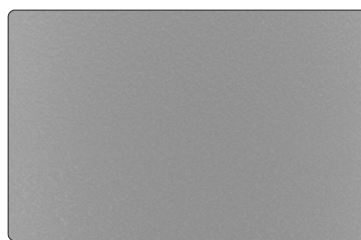
EQUIA Forte Coat

Working in synergy with EQUIA Forte HT Fill, the nano-filled, self-adhesive resin **EQUIA Forte COAT** features GC's single dispersion nanofiller and reinforced resin technologies, providing high wear resistance⁴ and a smooth & glossy touch to the restoration in just a few seconds.

- Strength and hardness³
- Wear resistance⁴
- Smooth and glossy surface



EQUIA Forte HT Fill
Without coat*



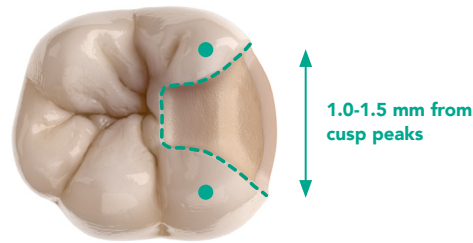
EQUIA Forte HT Fill
Coated*



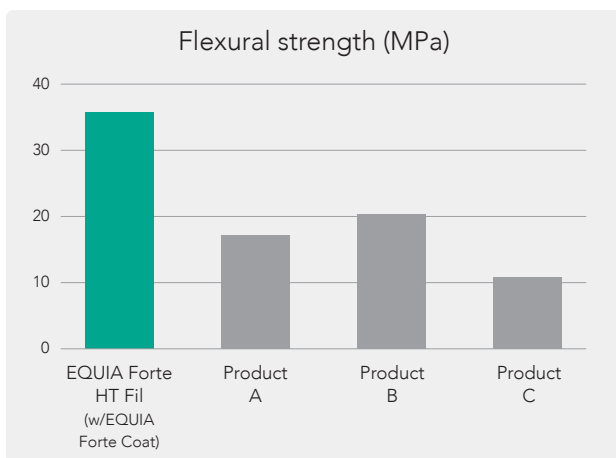
* SEM Pictures of EQUIA Forte HT Fill Restoration Magnification: X1000 Source: GCC R&D Data. Data on file available from info.australasia@gc.dental.

Strong & durable^{1,2,4,6,7}

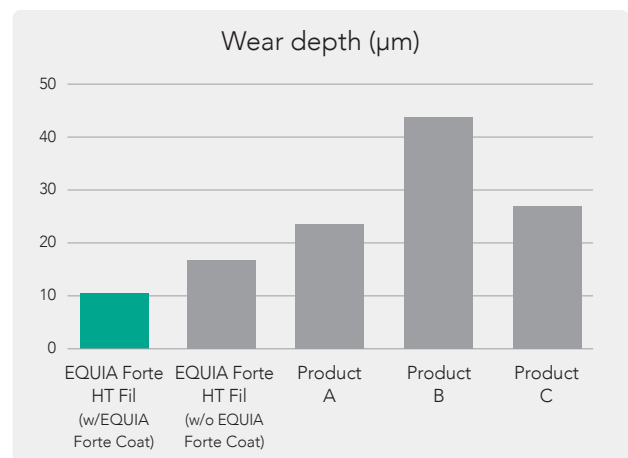
Glass hybrid systems offer the strength of the latest innovative glasses combined with the wear resistance of a nano-filled coating. The unique synergy between the coating and the restorative material improves the durability⁷ and wear resistance of the restorations.⁴



EQUIA Forte HT is indicated for stress-bearing Class II cavities.



Source: Siena University, Italy by Prof. Marco Ferrari Data on file [ISO 20795: Flexural strength] available from info.australasia@gc.dental.



Source: GC R&D, Japan, 2018. Data on file [in house test, bovine enamel, 300g load, 20000 cycles] available from info.australasia@gc.dental.

Long-term performance and cost-effectiveness^{1,2}

EQUIA Forte HT is a reliable system based on 5 years of clinical experience with EQUIA Forte. Results from a multicenter randomised clinical trial show that EQUIA Forte performs **as good as composite after 5 years, with survival rate of 94.5%**.⁸

Short chair time, less interventions needed over the years and similar performance as resin composites, these features make Glass Hybrids a cost-effective alternative according to several independent, long-term clinical studies.^{1,2}



Survival rate at 5 years.

Learn more



Eco-friendly

With 25% lower amount of plastic than the competition, GC capsules contribute to reduce the amount of CO₂ emission and empower dentists to contribute to green dentistry. Dental Advisor reports that "Equia Forte HT Fil capsule packaging has less total mass than the other products (...) making it the most efficient packaging design." *DA



Learn more



Fast & easy bulk placement

EQUIA Forte HT can be used in the partial caries excavation technique to create minimally invasive preparations. As no etching is used and the system relies on chemical adhesion, there is less risk of post-operative sensitivity⁶⁻⁸ – which also makes it a safe treatment solution.



Place
True bulk-fill technique
Convenient capsule
delivery

Shape
Prolonged working time
Easy to contour
Non -sticky

Finish
Set after 2'30"

Coat
Glossy surface without
polishing with increased
wear resistance and
exceptional marginal seal

Light-cure
Finished in just 3'25"

EQUIA Forte HT, your best partner for posterior restorations.



Courtesy of Dr. Z Bilge Kütük, Turkey



Main indications for EQUIA Forte HT

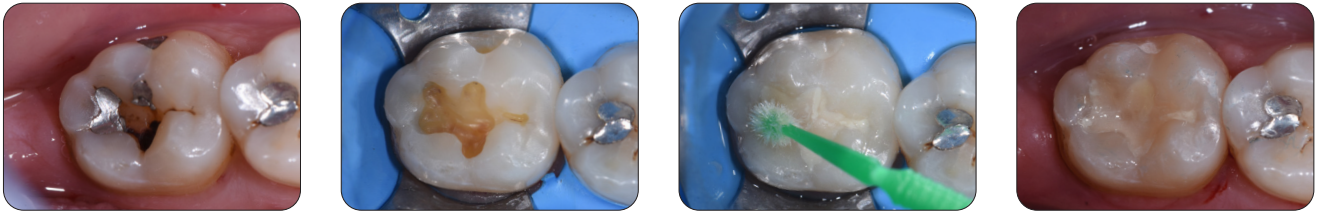
Excellent biocompatibility

EQUIA Forte HT exhibits a strong chemical bond to tooth providing exceptional marginal seal. Isolation is not needed as the bond strength is not compromised even in the presence of saliva. Since no etchant is used, there is virtually no post-operative sensitivity.⁶⁻⁸ Due to its hydrophilic nature and coefficient of thermal expansion similar to dentine, it is an excellent biocompatible material.

Your alternative for a wide range of situations!

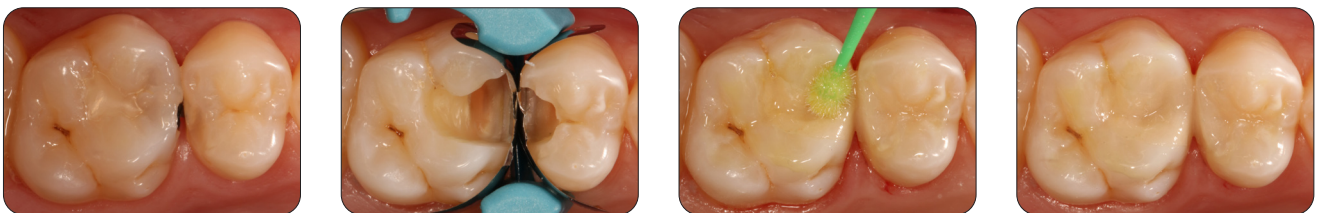
Amalgam replacement

Courtesy of Dr. Victor Cedillo Felix, USA



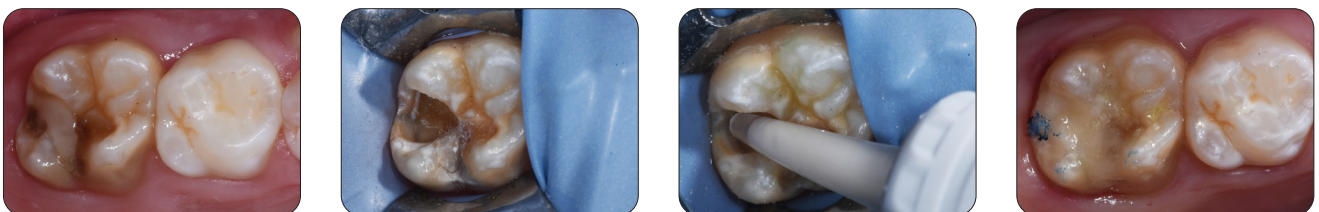
High caries risk patient

Courtesy of Dr. Zeynep Bilge Kütük, Turkey



Restoration of MIH affected teeth

Courtesy of Dr. Patrick Rouas, France



References:

1. Schwendicke, Falk et al. "Glass hybrid versus composite for non-cariou cervical lesions: Survival, restoration quality and costs in randomized controlled trial after 3 years." *Journal of dentistry* vol. 110 (2021): 103689. doi:10.1016/j.jdent.2021.103689. <https://pubmed.ncbi.nlm.nih.gov/33979577/>
2. Gurgan S, Kutuk ZB, Ergin E, Ozlas SS, Cakir FY. Clinical performance of a glass ionomer restorative system: a 6-year evaluation. *Clin Oral Investig* 2017;21:2335-2343. <https://pubmed.ncbi.nlm.nih.gov/28000039/>
3. Shahrooz S et al 2020. Mechanical and Optical Properties of a Novel Bulk Fill Glass Hybrid Restorative Dental Material. *J Dent Res*, Vol. 99 Spec Iss A: #3382. <https://iadr.abstractarchives.com/abstract/20iags-3322102/mechanical-and->
4. Kutuk ZB et al 2019. Mechanical performance of a newly developed glass hybrid restorative in the restoration of large MO Class 2 cavities. *Niger J Clin Pract*. 2019 Jun;22(6):833-841. <https://pubmed.ncbi.nlm.nih.gov/31187770/>
5. Kharna K, Zogheib T, Bhandi S, Mehanna C. Clinical Evaluation of Microhybrid Composite and Glass Ionomer Restorative Material in Permanent Teeth. *J Contemp Dent Pract*. 2018 Feb 1;19(2):226-232. <https://pubmed.ncbi.nlm.nih.gov/29422475/>
6. Mushtaq U et al. Comparative evaluation of postoperative sensitivity following restoration of Class I lesions with different restorative materials: An In Vivo Study. *J Contemp Dent Pract*. 2021 June; 22(6): 650-654. <https://www.thejcdp.com/doi/pdf/10.5005/jp-journals-10024-3085>
7. Basso M et al. 7 Years, Multicenter, Clinical Evaluation on 154 Permanent Restorations Made with a Glass Ionomer-based Restorative System. *J Dent Res* Vol 95 (Spec Iss B):0446. <https://iadr.abstractarchives.com/abstract/16iags-2474719/7-years-multicentre-clinical-evaluation-on-154-permanent-restorations-made-with-a-glassionomer-based-restorative-system>
8. Miletic I, et al. Five-year Performance of Glass-Hybrid and Nano-Hybrid Restoratives: Multi-Centre Clinical Trial. *J Dent Res* Vol 102 (Spec Iss C): 0363 ced-iadr2023.com/wp-content/uploads/2023/09/Abstract-book-01092023.pdf

EQUIA Forte™ HT



EQUIA Forte™ HT Fil Refill

Contains: 50 EQUIA Forte™ HT Capsules
(Powder 0.4g, Liquid 0.13g (0.10ml) per capsule).
Shades: Assorted, A1, A2, A3, A3.5, B1, B2, B3,C4



EQUIA Forte™ Coat Bottle Refill

Contains: One EQUIA Forte™ Coat (4ml) bottle



CAVITY CONDITIONER (GC)

Contains: One (5.7ml) bottle



GC CAPSULE APPLIER IV

Contains: One capsule applicator

PRODUCTS ON THIS PUBLICATION ARE NOT AVAILABLE FOR PURCHASE BY THE GENERAL PUBLIC.
ALWAYS READ THE LABEL AND FOLLOW THE DIRECTIONS FOR USE.

GC Australasia Dental Pty Ltd
1753 Botany Road Banksmeadow
NSW 2019 Australia
Tel. +61 2 9301 8200
info.australasia@gc.dental
www.gc.dental/australasia